

DZM- ELEVATOR CABINS

DZM ASANSÖR MAKİNE SANAYİ TİCARET LTD. ŞTİ.
TATLILAK MAHALLESİ -DARICALAR SOKAK
NO: 1B / İKON SANAYİ SİSTESİ E BLOCK
KARATAY KONYA.





INTRODUCTION

DZM Asansör is the result of years of experience, starting with Storklift in elevator exports, followed by TBEMSTORK in construction materials and international trade.

Today, we proudly launch our own production line, starting with elevator cabins – combining safety, design, and quality made in Turkey.





YOUR CABIN, YOUR IDENTITY.

At DZM Asansör, every cabin we produce reflects our dedication to quality, functionality, and modern aesthetics.

From raw materials to final assembly, our cabins are built to meet the highest industry standards — ensuring comfort, safety, and long-term performance.

Whether for residential, commercial, or special-use projects, our elevator cabins offer the perfect balance between engineering excellence and elegant design. Designed in Turkey. Trusted worldwide.

At DZM Asansör, each product campaign is built around real challenges faced by our customers. From customizable designs that reflect architectural identity, to safe and durable cabins that ensure peace of mind, we go beyond just manufacturing — we solve problems. Our campaigns highlight fast installation, global quality, inclusive access, and smart engineering. This variety reflects our deep market exploration and our mission to serve diverse needs with purposeful innovation.

SMART ELEVATOR CABINS



“ENGINEERED TO ELEVATE.”



01

"Engineered to Elevate"

A bold, all-purpose message highlighting quality and purpose. We don't just build cabins — we engineer experiences. DZM Asansör stands for safety, performance, and lasting value. Designed in Turkey, trusted around the world.

02

"Your Cabin, Your Identity"

Focused on personalization and modern design. Every building has its character — so should its elevator. Our cabins are made to reflect your vision, combining form, function, and flexibility in every detail.

03

"Built for Safety. Styled for Life."

A balance between technical confidence and visual appeal. DZM elevator cabins are crafted with precision engineering and timeless design, offering the perfect combination of security, comfort, and style for any project.



DMZ SERIES 100 PREMIUM

Premium Elevator Cabin

Our flagship cabin model, engineered for residential, commercial, and public buildings. Combines safety, style, and high performance. Certified to meet EN 81-20/50 standards.





Key Features:

- Robust Structure: Modular galvanized steel frame with anti-vibration support, load capacity up to 3000 kg
- Premium Wall Panels: Fire-resistant stainless steel, laminated, or powder-coated finishes
- Modern Ceiling: LED lighting with ventilation for comfort and energy efficiency
- Durable Flooring: Marble-look PVC, granite, or anti-slip rubber.
- Safe Handrails: Concealed fixings in stainless steel or optional wood.
- Advanced Control Panel: Microcontroller COP with Braille, LCD or touchscreen options.
- Quiet Operation: Acoustic insulation keeps noise below 50 dB
- Custom Sizes: Height 2,300 mm; door width 800–1,100 mm; customizable dimensions



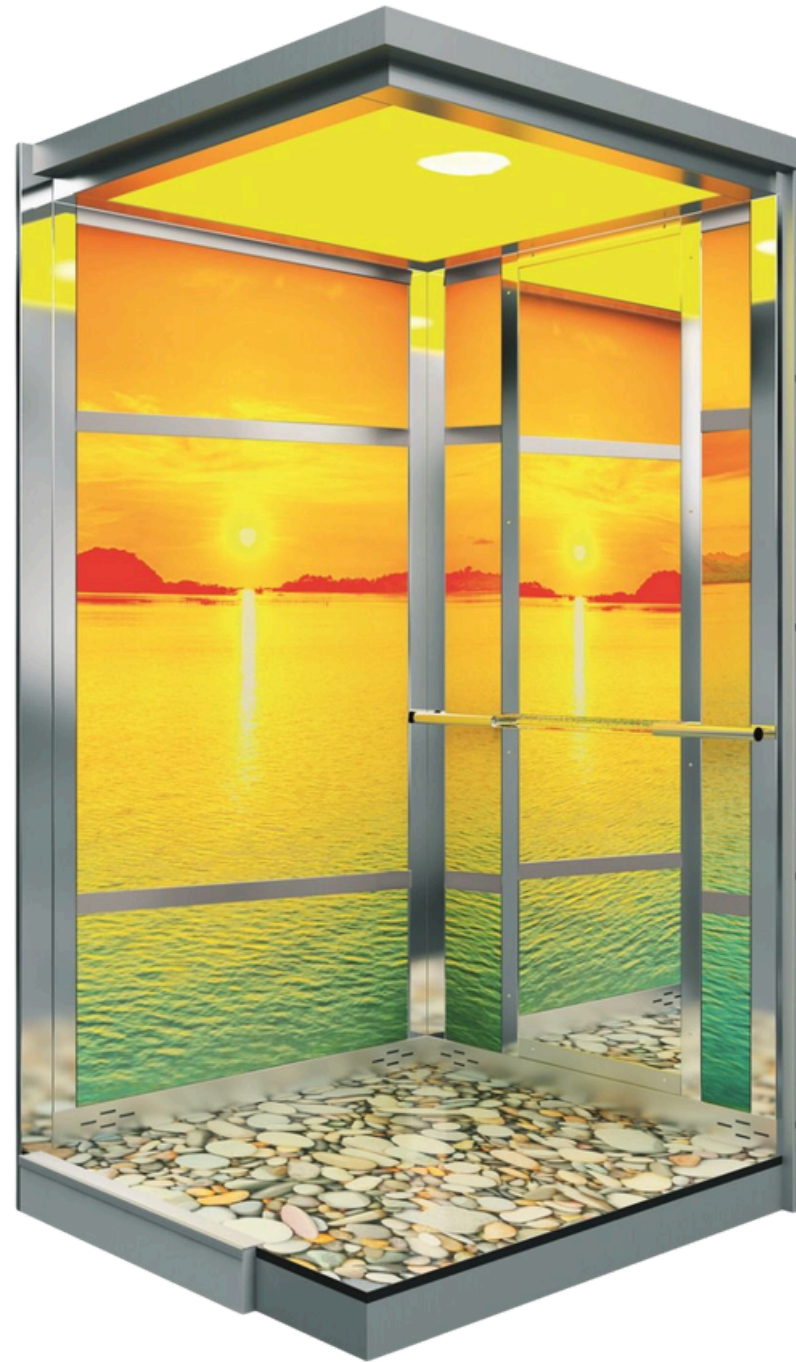
STAINLESS STEEL -DZM- STLP100

DZM-STPL100 SERIES

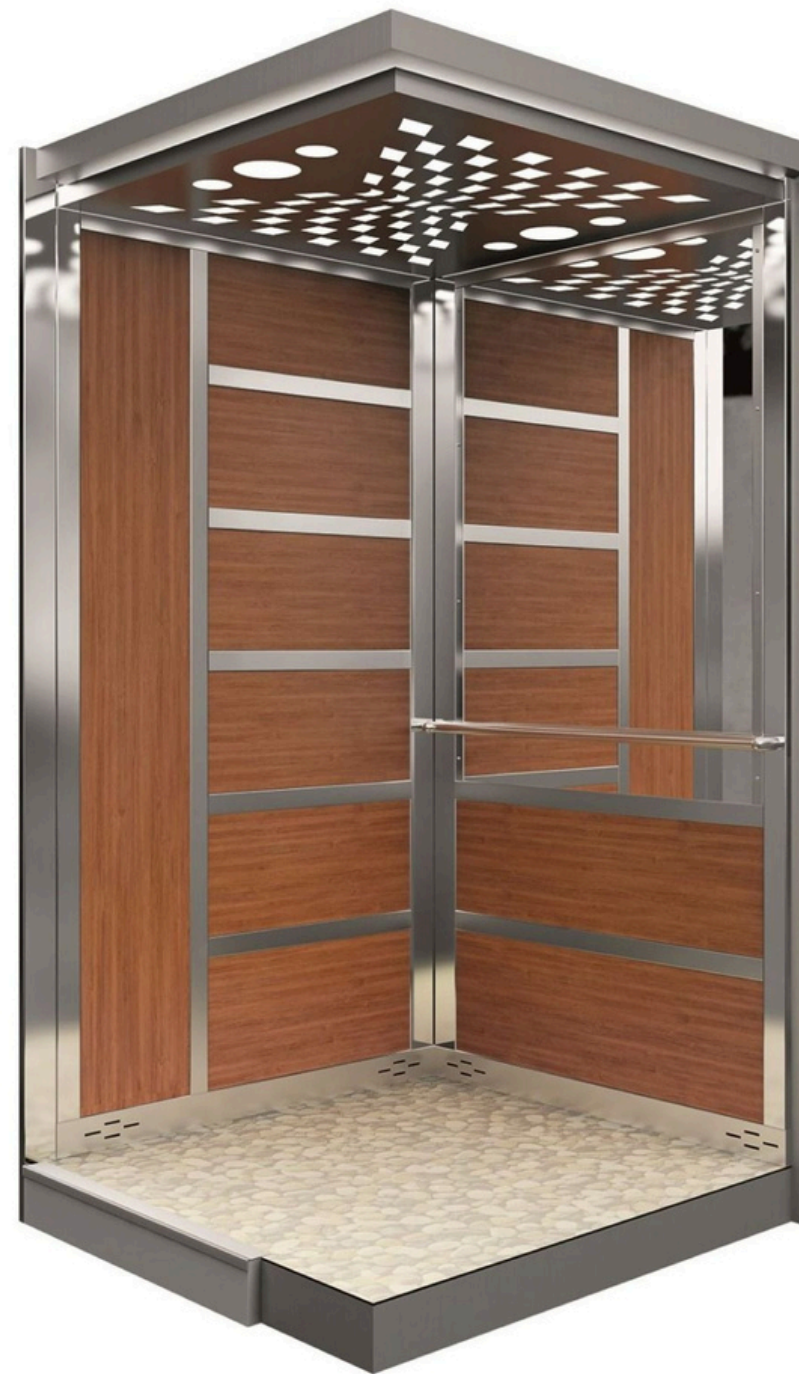
- Type: Premium elevator cabin for residential and commercial use
- Load Capacity: Up to 3000 kg
- Frame: Modular galvanized steel with anti-vibration support.
- Wall Panels: Fire-resistant stainless steel finishes.
- Ceiling: LED lighting with integrated ventilation
- Flooring: Marble-look PVC or anti-slip rubber.
- Handrails: Stainless steel, concealed fixing.
- Control Panel: Microcontroller-based with Braille and LCD options.
- Noise Level: Below 50 dB
- Standard Dimensions: Height 2,300 mm; Door width 800–1,100 mm; customizable
- Safety: Emergency lighting, alarm, safety gear, EN 81-20/50 compliant
- Customization: Logo engraving, mirrors, glass walls, voice announcement



DZM- STLP100



Ceiling: lazer Cutting.
Floor: Antibacterial wall.
Rear wall: Mirror full size with handrail.
Side Walls: Printed Glass Natural view.



Ceiling: lazer Cutting.
Floor: Antibacterial wall.
Rear wall: Mirror full size with handrail.
Side Walls: Wooden Panels with stainless steel accessoires.



Ceiling: lazer Cutting.
Floor: Antibacterial wall.
Rear wall: Mirror full size with handrail.
Side Walls: Wooden Panels with stainless steel accessoires.



Ceiling: lazer Cutting.
Floor: Antibacterial wall.
Rear wall: Mirror full size with handrail.
Side Walls: Wooden Panels with stainless steel accessoires.



Ceiling: lazer Cutting.
Floor: Antibacterial wall.
Rear wall: Mirror full size with handrail.
Side Walls: Printed Glass Natural View.



Ceiling: lazer Cutting.
Floor: Antibacterial wall.
Rear wall: Mirror full size with handrail.
Side Walls: Wooden Panels with stainless steel accessoires.



Ceiling: lazer Cutting.
Floor: Antibacterial wall.
Rear wall: Mirror full size with handrail.
Side Walls: Wooden high gloss Panels with stainless steel accessoires.



Ceiling: lazer Cutting.
Floor: Antibacterial wall.
Rear wall: Mirror full size with handrail.
Side Walls: Wooden Panels with stainless steel accessoires.



Ceiling: lazer Cutting.
Floor: Antibacterial wall.
Rear wall: Mirror full size with handrail.
Side Walls: Printed glass natural view.



Ceilling: lazer Cutting.
Floor: Antibacterial wall.
Rear wall: Mirror full size with handrail.
Side Walls: Wooden Panels with stainless steel accessoires.



Ceilling: lazer Cutting.
Floor: Antibacterial wall.
Rear wall: Mirror full size with handrail.
Side Walls: Printed Glass Natural view.



Ceilling: lazer Cutting.
Floor: Antibacterial wall.
Rear wall: Mirror full size with handrail.
Side Walls: Printed glass mozaik view.



Ceiling: lazer Cutting.
Floor: Antibacterial wall.
Rear wall: Mirror full size with handrail.
Side Walls: satinless steel and decorative motifs.



Ceiling: lazer Cutting.
Floor: Antibacterial wall.
Rear wall: Mirror full size with handrail.
Side Walls: satinless steel Plain design.



Ceiling: lazer Cutting.
Floor: Antibacterial wall.
Rear wall: Mirror full size with handrail.
Side Walls: satinless steel and decorative motifs.



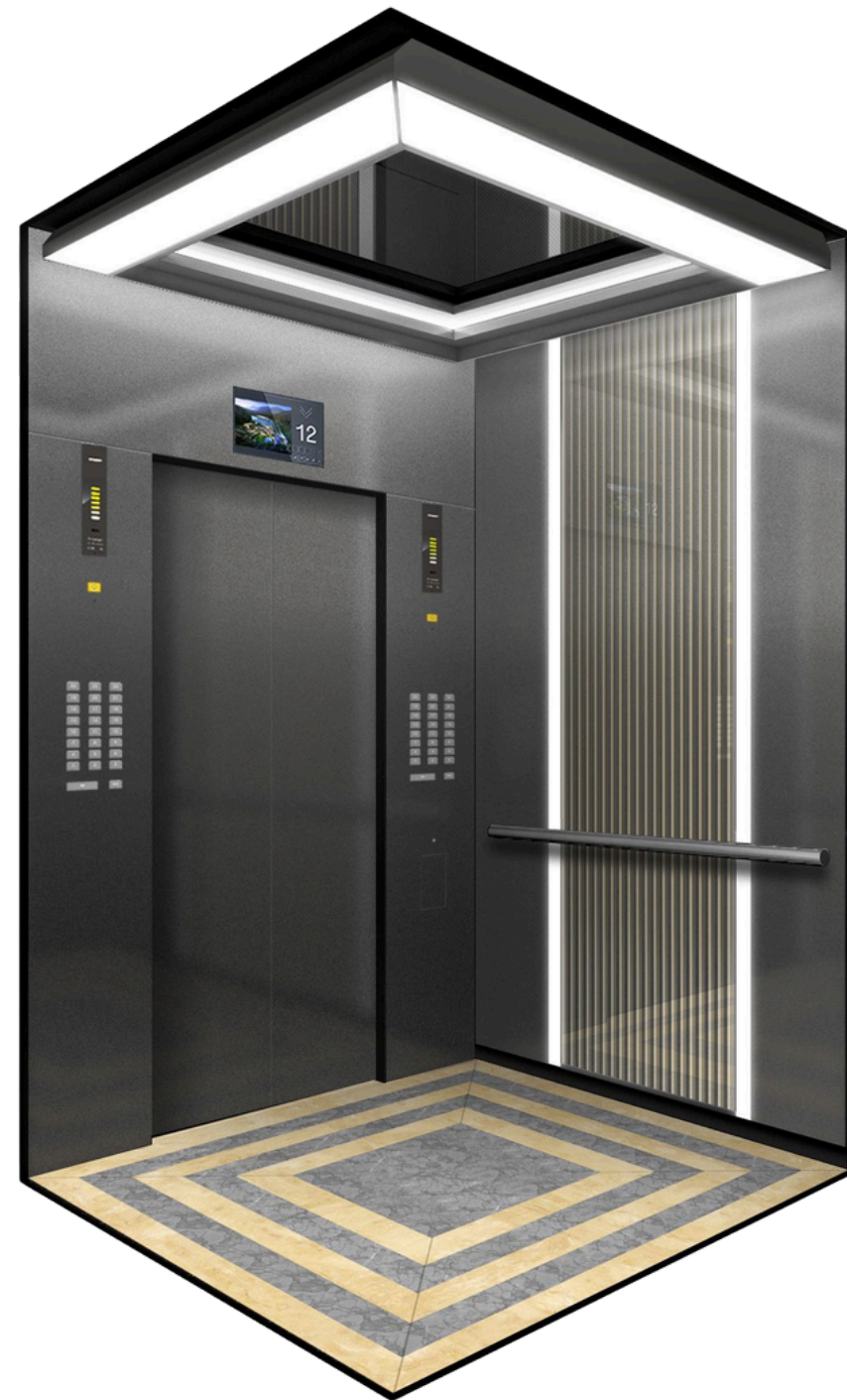
Ceilling: lazer Cutting.
Floor: Antibacterial wall.
Rear wall: Mirror full size with handrail.
Side Walls: black glass and decorative stainless steel.



Ceilling: lazer Cutting.
Floor: Antibacterial wall.
Rear wall: Mirror full size with handrail.
Side Walls: satinless steel and wooden panels Membrane.



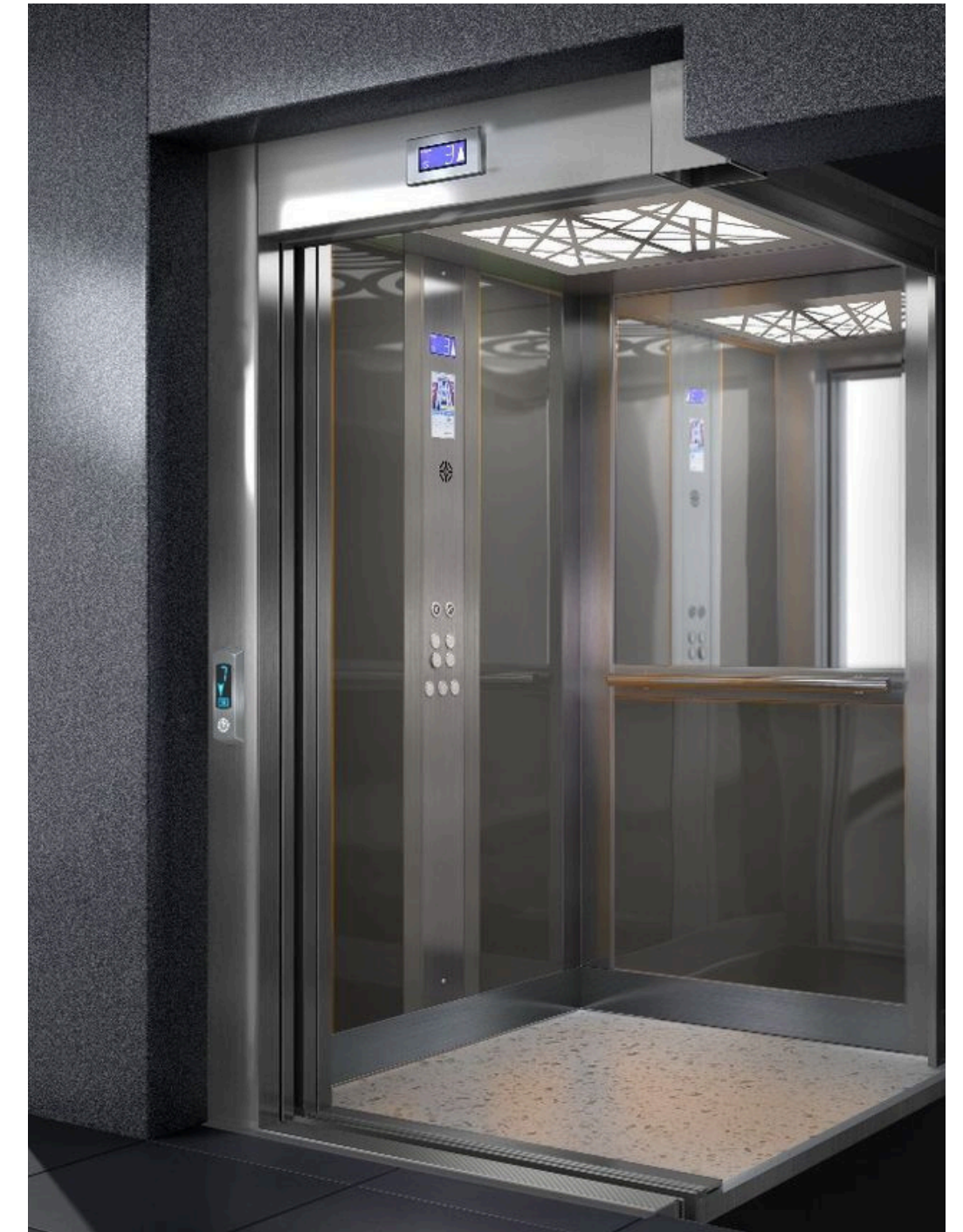
Ceilling: lazer Cutting.
Floor: Antibacterial wall.
Rear wall: Mirror full size with handrail.
Side Walls: satinless steel and Printed glass city view.



Ceilling: lazer Cutting.
Floor: Antibacterial wall.
Rear wall: Mirror full size with handrail.
Side Walls: Gold satinless steel and decorative motifs with Led Lights.



Ceilling: lazer Cutting.
Floor: Antibacterial wall.
Rear wall: Mirror full size with handrail.
Side Walls: wooden panels with stainless steel accessories.

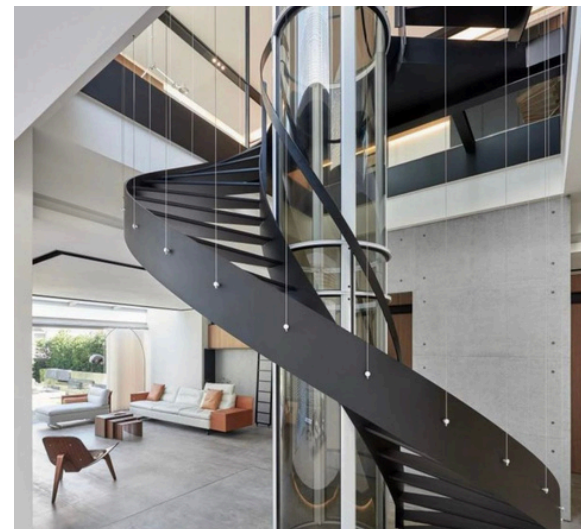


Ceilling: lazer Cutting.
Floor: Antibacterial wall.
Rear wall: Mirror full size with handrail.
Side Walls: Decoratif satinless steel and decorative motifs with Led Lights.

FULL PACKAGE ELEVATORS – PASSENGER

Complete elevator system with all essential components, designed for smooth, safe, and efficient vertical transport. Available in Gearless, Geared, and Hydraulic drive options.

- Load Capacity: 320–1600 kg
- Speed Options: 0.63 m/s – 1.6 m/s (customizable)
- Travel Height: Up to 60 meters
- Stops: Up to 20



- Drive Types:
- Gearless Traction – High efficiency, low noise, ideal for high-rise buildings
- Geared Traction – Cost-effective, reliable for medium-rise applications
- Hydraulic – Smooth operation, perfect for low-rise buildings and heavy loads



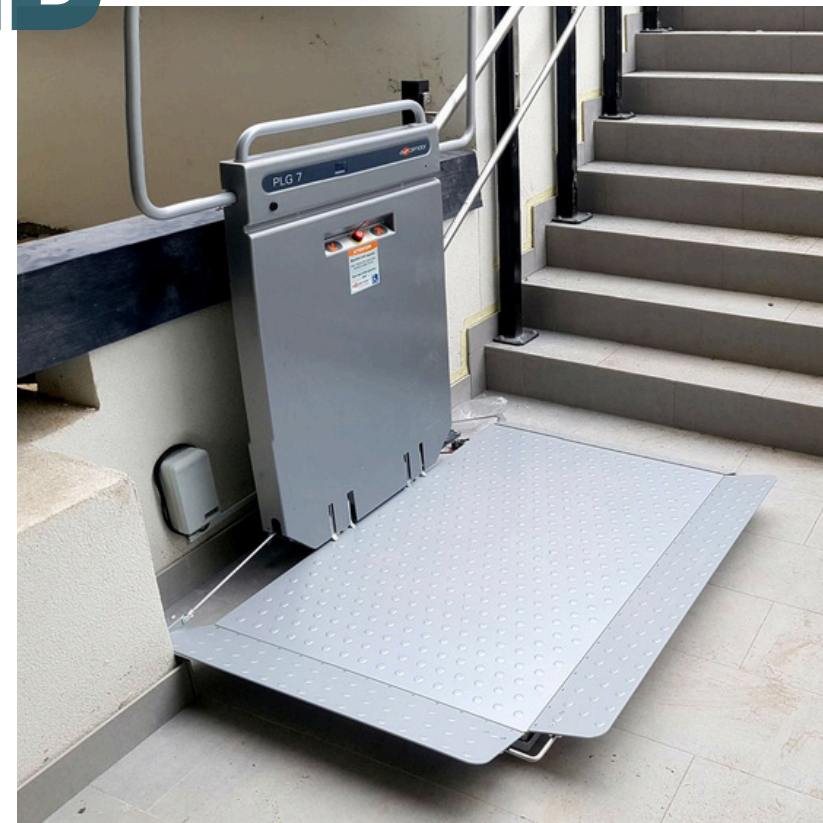
- Door Type: Automatic sliding, center opening, telescopic
- Cabin Options: Stainless steel, painted steel, glass, or customized finishes
- Control System: Microprocessor-based with VVVF drive
- Power Supply: 380V 3-phase, 50/60 Hz
- Safety Features: Overload protection, emergency alarm, automatic rescue device (ARD)

Functions:

- Smooth acceleration & deceleration for passenger comfort
- Energy-saving operation with VVVF technology
- Flexible design for residential, commercial, and industrial use
- Optional voice announcement & floor display
- Low noise and vibration levels



DISABLED ELEVATORS AND PLATFORM



Safe, reliable, and user-friendly vertical transport solutions designed to ensure accessibility for people with reduced mobility. Suitable for homes, public buildings, and commercial spaces.

Specifications:

- Load Capacity: 250–500 kg
- Speed: 0.15–0.5 m/s
- Travel Height: Up to 15 meters
- Stops: Up to 6
- Drive Types: Hydraulic / Screw-driven / Traction
- Platform Size: Customizable to building requirements
- Door Type: Manual or automatic swing/slide
- Cabin Type: Open platform or enclosed cabin
- Control System: Simple push-button with hold-to-run operation for safety
- Power Supply: 220V single-phase or 380V three-phase

Functions:

- Easy access for wheelchairs and mobility devices
- Smooth and quiet operation
- Safety sensors to stop movement if obstruction detected
- Emergency lowering system in case of power failure
- Non-slip floor and handrails for user safety
- Weather-resistant options for outdoor use

HOMELIFT – VILLA

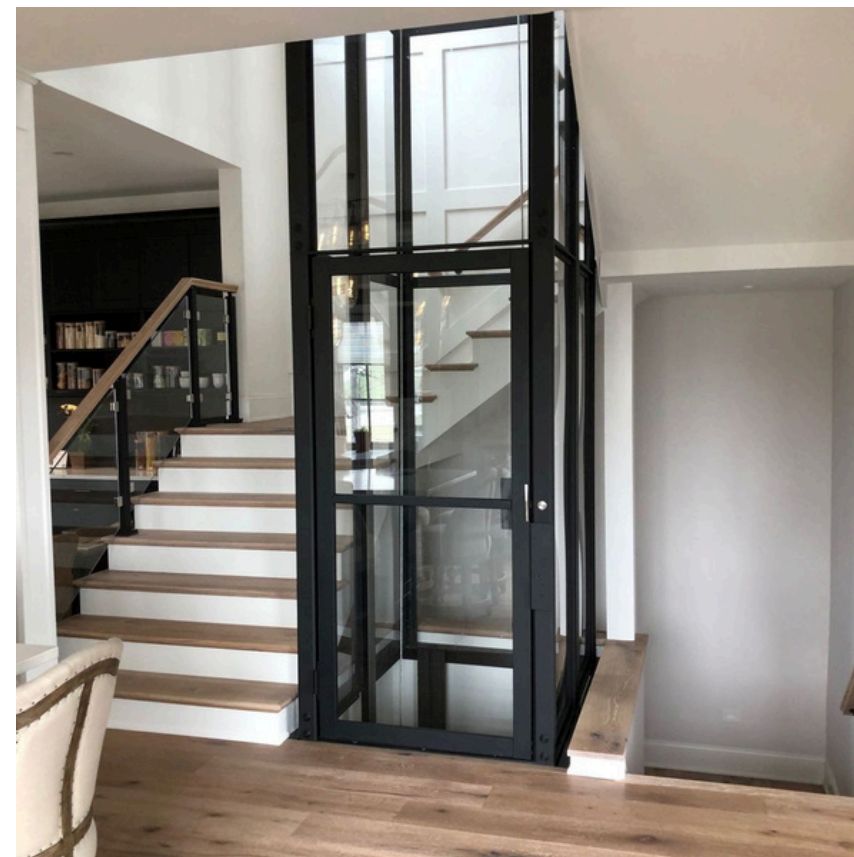
Compact and stylish vertical transport solution designed for private residences. Combines comfort, safety, and elegance to enhance home accessibility.

Specifications:

- Load Capacity: 250–500 kg
- Speed: 0.15–0.4 m/s
- Travel Height: Up to 15 meters
- Stops: Up to 6
- Drive Types: Hydraulic / Screw-driven / Gearless traction
- Cabin Options: Glass, stainless steel, painted steel, or custom finishes
- Door Type: Manual swing, automatic sliding, or folding
- Platform Size: Customizable to fit available space
- Power Supply: 220V single-phase or 380V three-phase
- Safety Features: Overload protection, emergency stop, automatic lowering system

Functions:

- Smooth and quiet ride for residential comfort
- Space-saving design, ideal for existing or new homes
- Low pit and headroom requirements
- Energy-efficient and low maintenance
- Optional voice announcements and floor displays
- Enhanced accessibility for elderly or disabled users



FREIGHT ELEVATORS

Heavy-duty vertical transport solution designed for reliable movement of goods in warehouses, factories, shopping centers, and industrial facilities. Built for durability, safety, and efficiency under high-load conditions.

Specifications:

- Load Capacity: 500–5000 kg
- Speed: 0.25–1.0 m/s (customizable)
- Travel Height: Up to 40 meters
- Stops: Up to 12
- Drive Types: Gearless traction / Geared traction / Hydraulic
- Cabin Construction: Heavy-duty steel, reinforced flooring, optional anti-slip surface
- Door Type: Manual or automatic vertical bi-parting / sliding doors
- Control System: Microprocessor-based with VVVF drive
- Power Supply: 380V 3-phase, 50/60 Hz
- Safety Features: Overload protection, emergency stop, interlocked doors.

Functions:

- Designed for heavy and oversized loads
- Smooth acceleration & deceleration for load stability
- Low maintenance and long service life
- Suitable for industrial, commercial, and service environments
- Custom cabin sizes and finishes available
- Can be integrated with loading docks or conveyor systems



DUMMWAITER

Compact service lift designed for quick, safe, and convenient transport of small goods, meals, documents, or supplies between floors. Ideal for restaurants, hotels, offices, hospitals, and private homes.

Specifications:

- Load Capacity: 50–300 kg
- Speed: 0.25–0.6 m/s
- Travel Height: Up to 30 meters
- Stops: Up to 12
- Drive Types: Traction / Hydraulic
- Cabin Construction: Stainless steel or painted steel with reinforced base
- Door Type: Manual or automatic vertical bi-parting / swing doors
- Control System: Simple push-button, microprocessor-based
- Power Supply: 220V single-phase or 380V three-phase
- Safety Features: Door interlocks, overload protection, emergency stop

Functions:

- Fast and efficient transport of small loads
- Space-saving design for minimal shaft requirements
- Low noise and vibration for quiet operation
- Reduces manpower and increases service efficiency
- Hygienic stainless steel options for food service
- Custom sizes and finishes available



HOSPITAL LIFT



Specially designed for healthcare environments, ensuring safe, smooth, and hygienic transport of patients, medical staff, and equipment. Built to accommodate stretchers, wheelchairs, and medical trolleys with maximum reliability.

Specifications:

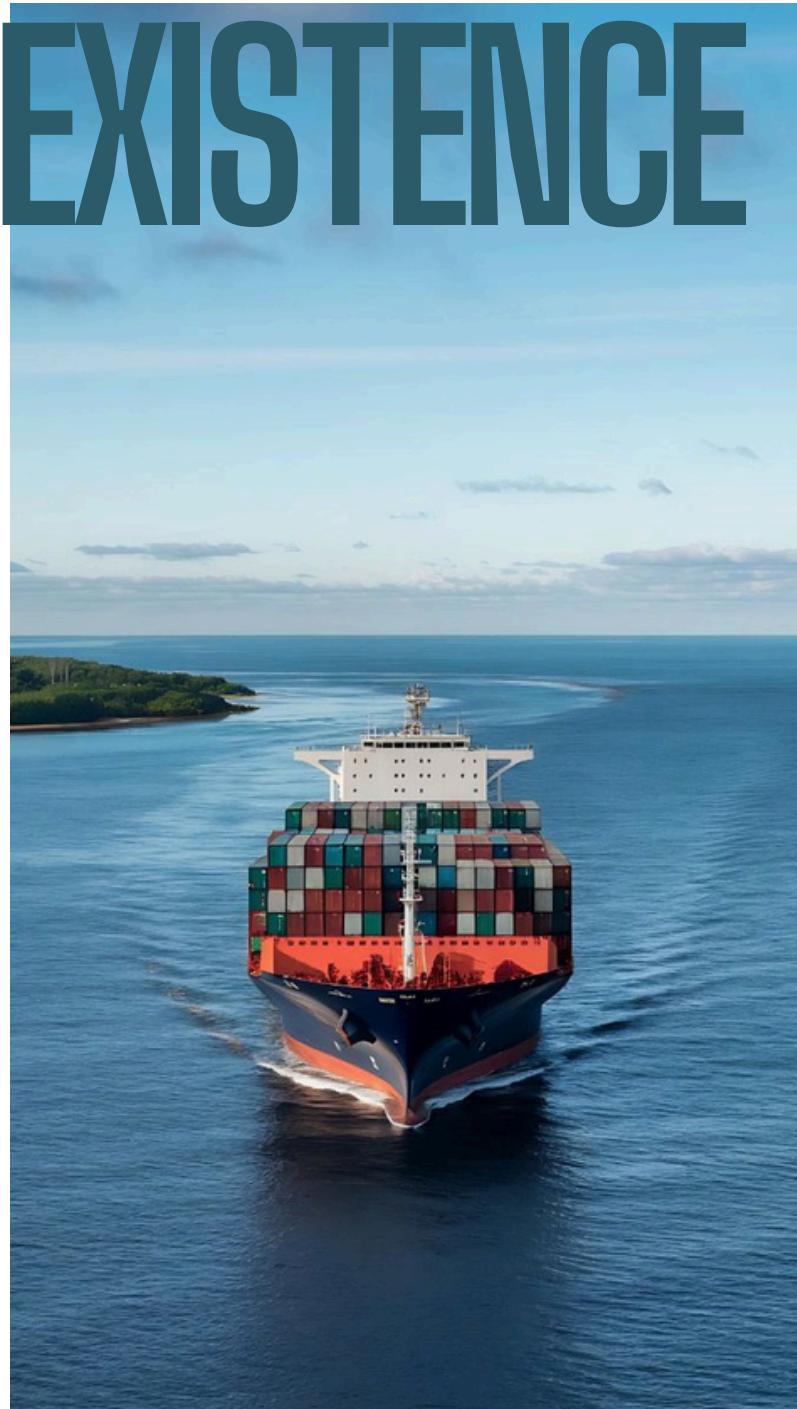
- Load Capacity: 1000–2500 kg
- Speed: 0.63–1.6 m/s
- Travel Height: Up to 60 meters
- Stops: Up to 20
- Drive Types: Gearless traction / Geared traction / Hydraulic
- Cabin Construction: Stainless steel interior with easy-to-clean surfaces and rounded corners
- Door Type: Automatic sliding, center opening (wide opening for stretchers)
- Control System: Microprocessor-based with VVVF drive
- Power Supply: 380V 3-phase, 50/60 Hz
- Safety Features: Overload protection, emergency stop, automatic rescue device (ARD), smooth leveling for stretchers

Functions:

- Wide cabin and door dimensions for patient beds and equipment
- Anti-bacterial finishes for infection control
- Quiet and smooth operation for patient comfort
- Precision leveling for safe loading and unloading
- Energy-efficient and reliable for 24/7 operation
- Customizable interiors and control panels for hospital requirements

EXPORTS INTERNATIONAL

EXISTENCE



At DZM Asansör, we take pride in delivering high-quality elevator solutions to clients around the world. Our export network spans multiple regions, providing full package elevators, homelifts, hospital elevators, disabled platforms, freight elevators, and dumbwaiters that meet international safety and performance standards.

With years of experience in global trade, we understand the unique requirements of each market and offer customized designs, multilingual documentation, and flexible shipping solutions.

We currently export to Middle East, Africa, Europe, and Asia, serving residential, commercial, and industrial projects with the same commitment to quality and reliability.

Why Choose DZM Asansör for Exports?

- Proven track record in international markets
- Compliance with EN, CE, and ISO standards
- Competitive lead times and shipping coordination
- Tailored solutions for local building regulations
- After-sales support and spare parts availability

Global Reach – Local Care.

Wherever your project is, we are ready to deliver.

THANK YOU

WE ARE READY TO ASSIST YOU

Rising Together with DZM Asansör

From full package elevators to homelifts and accessibility platforms, we deliver solutions that combine innovation, safety, and style. Every product is designed with precision engineering, premium materials, and a commitment to excellence.

At DZM Asansör, our mission is simple – to move people and goods safely, smoothly, and efficiently. Whether in a home, business, or public space, we bring comfort and reliability to every ride. Your destination matters to us – let's rise together.

📍 INDUSTRIAL ZONE KONYA / TURKEY .

☎ 0090 530 392 23 29 🌐 www.dzmelevator.com

